

Thailand's NBTC relies on R&S® ARGUS spectrum monitoring system

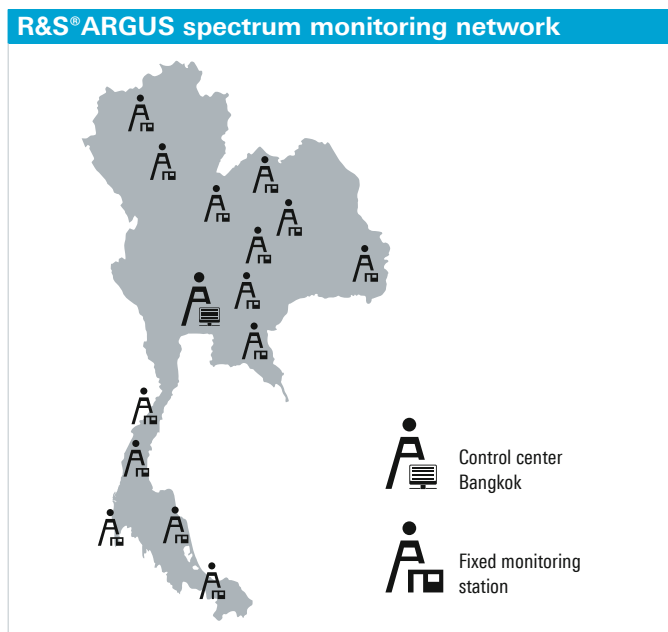
Thailand's National Broadcasting and Telecommunications Commission (NBTC) extended its R&S® ARGUS spectrum monitoring network in 2018. The 15 new fixed stations can be controlled on site or remotely from the authority's headquarters. The system allows manual and automatic measurements, recordings and evaluations in line with ITU recommendations. It supports the NBTC in interference hunting applications, planning the spectrum, assigning new frequencies and other tasks that help to optimize the use of the spectrum.

In 2018, Thailand's regulatory authority NBTC replaced existing stations with new R&S® ARGUS spectrum monitoring systems. Their technical parameters as well as their measurements completely comply with ITU recommendations. These include measurements for frequency, bandwidth, field strength and modulation as well as evaluations for spectrum occupancy and frequency occupancy. Besides direct control, the R&S® ARGUS monitoring

software provides operators with automatic measurements. These measurements start and stop as needed, recording data and audio signals and triggering warnings when measured values exceed reference levels. This allows the authority to verify compliance with the licensed parameters and guidelines for transmitter systems. Any violation or radio interference source can be detected, identified and followed up.



Khon Kaen monitoring station



NBTC operators control the 15 stations locally or from headquarters. There, the R&S®ARGUS software provides several open interfaces that offer great benefits. For example, one interface allows spectrum-planning officers to create measurement tasks within the spectrum management system. This enables them to obtain actual data about the use of certain frequencies or the spectrum. R&S®ARGUS takes over the tasks, transfers them to the corresponding remote station and automatically returns the measured results. This way, the officers receive the real information in the spectrum management system. Another interface works the other way around. It allows monitoring operators at remote stations or in the control center to retrieve data from the spectrum management database. This enables them to verify the spectrum compliancy in a specific band in the area of the remote station. The system verifies conformity of licensed transmitters and detects unauthorized emissions.

The monitoring stations cover the frequency range from 20 MHz to 3 GHz. The R&S®ESMD wideband monitoring receiver, controlled via computer or via front panel, serves as the core of each station. The R&S®ESMD receivers get the signals from a set of omnidirectional antennas on top of the masts. The antenna heights along with the systems' sensitivity enable wide coverage ranges. However, due to the proximity to broadcast stations and mobile network infrastructure, some stations have to cope with dense signal environments. Despite this, the receivers' high dynamic range and the antennas' passive character allow excellent linearity and receiving capabilities. At particularly difficult sites, additional attenuators, tunable notch filters for mobile radio bands and additional FM band notch filters make the systems adaptable to such areas of high field strengths.

Before delivery of the 15 fixed stations, Rohde&Schwarz supplied the NBTC with a total of nine mobile R&S®ARGUS monitoring stations since 2010. All these spectrum monitoring stations allow the NBTC to keep pace with advances in communications technology and the growth of available radio services.

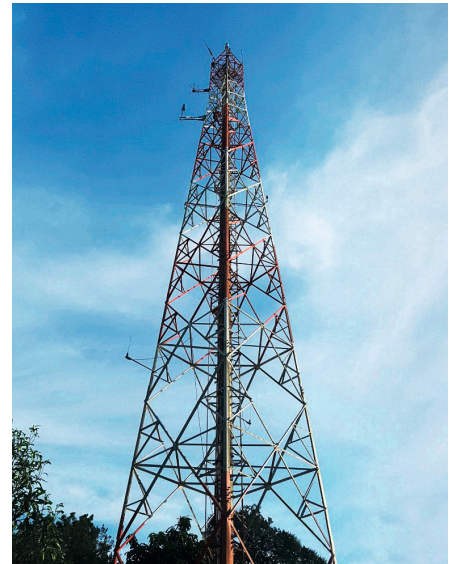
R&S®HK309 and R&S®HF902 monitoring antennas overlooking Thailand's landscape



The R&S®HK033 omnidirectional monitoring antenna



Several monitoring antennas mounted on a mast



Rohde & Schwarz GmbH & Co. KG

Europe, Africa, Middle East | +49 89 4129 12345
customersupport@rohde-schwarz.com
North America | 1 888 TEST RSA (1 888 837 87 72)
customer.support@rsa.rohde-schwarz.com
Latin America | +1 410 910 79 88 | customersupport.la@rohde-schwarz.com
Asia Pacific | +65 65 13 04 88 | customersupport.asia@rohde-schwarz.com
China | +86 800 810 82 28 | +86 400 650 58 96
customersupport.china@rohde-schwarz.com
www.rohde-schwarz.com

R&S® is a registered trademark of Rohde & Schwarz GmbH & Co. KG
Trade names are trademarks of the owners
PD 3609.3620.32 | Version 01.00 | August 2019 (ch)
Thailand's NBTC relies on R&S®ARGUS spectrum monitoring system
Data without tolerance limits is not binding | Subject to change
© 2019 Rohde & Schwarz GmbH & Co. KG | 81671 Munich, Germany

